

Steel  
Magnolia



*Payson Community Theatre*

*Steel  
Magnolias*

*a new comedy*

*by*

*Robert Harling*

*Directed by*

*Charles Lynn Frost*

*March 9, 10, 11; 16, 17, 18; 23, 24, 25*

*Payson Civic Center Theatre*

*435 West 100 South*

*Payson, Utah*

*7:30 p.m. curtain*

## CAST

*Truvy Jones*  
*Annele Dupuy-Desoto*  
*Clairee Belcher*  
*Shelby Eatenton-Latcherie*  
*M'Lynn Eatenton*  
*Ouiser Boudreaux*  
*KPPD radio announcer*

*Allison Hickman Warner*  
*Polly Dunn*  
*Click Ball*  
*Michele Moon*  
*Linda Ludlow*  
*Elaine Guest*  
*Val C. Rowley*

## PRODUCTION STAFF

*Director*  
*Assistant Director*  
*Set Design*  
*Set Construction*

*Scenic Painter*  
*Lighting/Sound Director*  
*Lighting/Sound Assistants*  
*Publicity Director*  
*Publicity Consultant*  
*Costumer*  
*Properties*  
*Properties Assistants*

*Publicity Assistants*

*Graphics*  
*Box Office*  
*House Manager*

*Charles Lynn Frost*  
*Brenda Russell*  
*Charles Lynn Frost*  
*Richard Lindsey, Steve Twede,*  
*Alan Anderson, Willis Pulver,*  
*Roger Green, Steve Lindsey*  
*Steve Twede*  
*Richard Lindsey*  
*Craig Dunford, Steve Lindsey*  
*Petrina Mueller*  
*Carin Green*  
*Renee Kennedy*  
*Brenda Russell*  
*Andrew Owens, Rock White,*  
*Kelli Frost*  
*Helena Mueller, Karl Mueller,*  
*Sabina Mueller, Mike Johnson*  
*Todd Mories*  
*Nedra Call*  
*Mary Christensen*

## SYNOPSIS OF SCENES

*Place:* Chinquapin, Louisiana, PRESENT

*Act I:*     *Scene 1:* April  
              *Scene 2:* December

*10 minute Intermission*

*Act II*     *Scene 1:* June, eighteen months later  
              *Scene 2:* November

## DIRECTOR'S NOTE

When I hopped a late New York City subway in 1987, heading towards Greenwich Village and the Lucille Lortel Theatre, I had no idea that the midnight performance of the play I was about to see would affect me so tremendously. After I witnessed STEEL MAGNOLIAS on that sultry August evening -- I knew I must direct the play as soon as it was available for amateur release. And so tonight's performance is a culmination of that long-desired opportunity.

What amazes me most is that according to actor-turned-playwright Robert Harling, this first play, which started as a short story for his nephew, was not so much written as remembered. "It took only 10 days to write because it was based on events in my life. . . I'm sure I could never write another play that quickly." My solid admiration for the vital role the playwright contributes to a successful theatrical happening - has literally doubled while working with Mr. Harling's hilarious and naturally crafted play.

Our rehearsals have been more like a much awaited evening spree, instead of the grinding rehearsals typical of community theatre. In other words all the ladies and I have had a ball bringing you STEEL MAGNOLIAS.

Ultimately we desire your enjoyment and entertainment as you share the next few hours with us -- Thank you for your active support of the arts in Utah Valley.

Warm regards,

Charles Lynn Frost  
Artistic Director--Steel Magnolias

## **Payson Community Theatre Board**

*President - Richard Lindsey*

*Alan Anderson  
Nedra Call  
Mary Christensen  
Dave Dahlquist  
Kelli Frost  
Lynn Frost  
Roger Green  
Renee Kennedy  
Ardis Leatham  
Willis Pulver  
Jay Thomas  
Nancy Wilson*

## **21 YEARS OF PAYSON COMMUNITY THEATRE**

<i>1968</i>	<i>Little Mary Sunshine</i>	<i>1983</i>	<i>Harvey</i>
<i>1969</i>	<i>Brigadoon</i>		<i>Annie</i>
<i>1970</i>	<i>Peter Pan</i>	<i>1984</i>	<i>Prisoner of Second Avenue</i>
<i>1971</i>	<i>The Wisdom Tree</i>		<i>1776</i>
<i>1972</i>	<i>Hello, Dolly</i>	<i>1985</i>	<i>The Farley Family Reunion</i>
<i>1973</i>	<i>Oliver</i>		<i>Peter Pan</i>
<i>1974</i>	<i>Oklahoma</i>	<i>1986</i>	<i>Crimes of the Heart</i>
<i>1975</i>	<i>South Pacific</i>		<i>Barnum</i>
<i>1976</i>	<i>Carousel</i>	<i>1987</i>	<i>Brighton Beach Memoirs</i>
<i>1977</i>	<i>No, No Nanette</i>		<i>Saturday's Warrior</i>
<i>1978</i>	<i>My Fair Lady</i>	<i>1988</i>	<i>Blindsight</i>
<i>1979</i>	<i>Kiss Me, Kate</i>		<i>Hello, Dolly</i>
<i>1980</i>	<i>Camelot</i>	<i>1989</i>	<i>Steel Magnolias</i>
<i>1981</i>	<i>Mame</i>		<i>The Sound of Music</i>
<i>1982</i>	<i>Music Man</i>		

**Charles Lynn Frost** (Director) has directed community theatre in Utah for the past twelve years. *STEEL MAGNOLIAS* marks the seventh winter production for the Payson Community Theatre. Having winter plays was a conception idea of Mr. Frost's. He has directed *BRIGHTON BEACH MEMOIRS*, *HARVEY*, *THE TROJAN WOMEN*, *SHENANDOAH*, *ANNIE*, *PETER-PAN*, *MAME*, *MUSIC MAN, 1776*, *BARNUM, NO, NO, NANETTE*, *GODSPELL*, *BLINDSIGHT*, *THE IMAGINARY INVALID*, *THE BELLE OF AMHERST*, and several other productions for community theatres and the university in the valley. He is currently serving as the President of the International Thespian Society! Theatre Education Association, the largest secondary theatre organization in the world. He is on the Board of Trustees for the Utah Theatre Association, and is the President and founder of Provo Community Theatre. He teaches theatre at Mountain View High School in Orem, and is married to Kelli Frost the theatre director at Spanish Fork High School. They have four children, Ryan, Joel, Aaron, and Rachel, and they live in Payson. Mr. Frost will be directing *A FUNNY THING HAPPENED ON THE WAY TO THE FORUM* for Provo Community Theatre this coming summer, with auditions slated on March 24 and 25.

**Brenda Russell** (Assistant Director) has worked for Payson Community Theatre on numerous occasions during the last six years. Beginning with *1776*, and encompassing such productions as *PETER PAN*, *BARNUM*, *SATURDAY'S WARRIOR*, and *BRIGHTON BEACH MEMOIRS*, Brenda has become a much sought after Properties Director. She has also served as Assistant Director for Payson Community Theatre's *BLINDSIGHT*, and *ALADDIN McFADDIN* for the Payson Playmakers Children's Theatre performance group. Brenda has served on the Board of Trustees for P.C.T., and works as the medical records and payroll director for Crestview Convalescent Center in Provo.

**Allison Hickman Warner** (Truvy) has been in every Payson Community winter production with the exception of two. She has appeared in *THE PRISONER OF SECOND AVENUE*, *CRIMES OF THE HEART*, *THE FARLEY FAMILY REUNION*, and *BRIGHTON BEACH MEMOIRS*. She has received several acting awards from the Utah Valley Theatre Guild. Allison has also been in *CAT ON A HOT TIN ROOF*, *THE IMAGINARY INVALID*, and *KING LEAR*. She works in Orem as a professional cosmetologist, and was recently married to David Warner who has performed in numerous BYU operas. Allison does community theatre because she thoroughly enjoys sharing her talents with an appreciative audience; Interestingly enough the character of Truvy parallels exactly what Allison does every day 9 to 5 - *HAIR!*



**Polly Dunn** (Annele) was last seen in Payson Community Theatre's ANNIE a Lily St. Regis, for which she won an Outstanding Supporting Actress Award from the Utah Valley Theatre Guild. She has directed BYE, BYE BIRDIE for the Art City Community Theatre last summer and has been engaged as the Artistic Director for P.C.T.'s summer musical production of THE SOUND OF MUSIC. Polly is married to Rob Dunn, and together they keep busy raising Jenny, Jimmy, Trisha, and Tiffany. They reside in Springville.

**Click Ball** (Clairee) was last seen in BLINDSIGHT - a premiere drama produced by P.C.T. in the winter of 1988. She has also been in MAME and MUSIC MAN. Click lives in Payson and runs the family business--Payson Auto with her husband Spike. They have two daughters and five grandchildren. Click is without a doubt the most active senior in Payson -- being heavily involved with the Payson Civic Chorale, Chamber of Commerce, the theatre, and golfing.

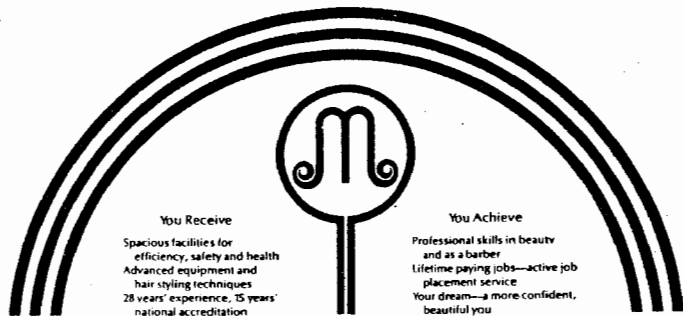
**Michele Moon** (Shelby) made her theatrical debut with P.C.T. in Neil Simon's BRIGHTON BEACH MEMOIRS as the character of Nora. She has also played in BARNUM, TROJAN WOMEN, and SHENANDOAH. Michele married Shawn Moon last summer, and now lives in Provo where she works for Word Perfect Corp. Michele has performed at the International Thespian Festival as Hermia in A MIDSUMMER NIGHT'S DREAM, where she represented the Rocky Mountain Region.

**Linda Ludlow** (M'Lynn) makes her P.C.T. debut in tonight's performance of STEEL MAGNOLIAS. Linda claims she is P.C.T.'s biggest fan, frequenting every past production as an active audience member. She was heavily involved in theatre during high school playing in OUR TOWN and ANNIE GET YOUR GUN. Linda is the Community Development Coordinator for Payson, in the League of Utah Cities. She is involved in golf, The Civic Chorale, and the Phi Delta Cultus Club. Linda lives in Payson with her husband Pete, they have four children, Shannon, Matt, Jaymes, and Clay.

**Elaine Guest** (Ouiser) comes to STEEL MAGNOLIAS as a veteran actress of Payson Community Theatre. Elaine has become perhaps the audience favorite in more P.C.T. musicals and plays than any other performer. Audiences will remember her as Miss Hannigan in ANNIE, or Vera Charles in MAME. She has also done HARVEY, THE MUSIC MAN, and MY FAIR LADY for the theatre. Elaine has been awarded Outstanding Actress and Outstanding Supporting Actress honors from the Utah Valley Theatre Guild. She works for the Wirthlin Group as a supervisor in Coding/Word processing. Elaine is married to Milton Guest, and they have lived in Payson for many years where they have raised their daughters.



Make your dream come true and change your lifestyle.



**You Receive**  
Spacious facilities for  
efficiency, safety and health  
Advanced equipment and  
hair styling techniques  
28 years' experience, 15 years'  
national accreditation

**You Achieve**  
Professional skills in beauty  
and as a barber  
Lifetime paying jobs—active job  
placement service  
Your dream—a more confident,  
beautiful you

### MARY KAWAKAMI COLLEGE OF BEAUTY

Complete family beauty care. We practice what we teach—beauty.  
336 West Center, Provo, Utah 373-5585

#### COMPLETE MEN'S AND WOMEN'S STYLE SERVICES



50 West Center St.  
Orem, Utah 84057  
224-6034

"Let Our Styles Go To Your Head"



## Put your home and auto insurance under one roof.

If you already insure your auto with the Farmers Insurance Group of Companies, insure your home with us, too. We'll provide you with peace of mind and sound assurance that your home and auto are properly protected.

For over 60 years the Agents with the Farmers Insurance Group of Companies have been making sure home sweet home stays that way.

**Douglas B. Judd**  
Insurance Agent

60 West Utah Avenue  
Payson, Utah 84651  
Bus. (801) 465-9271



# **SOUTH RIM REALTY**

13 East 100 North  
Payson, Utah 84651  
465-9239 • Res. 465-3590

Member  
Multiple  
Listing  
Service



REALTOR



## *Hullabaloo*

*"Customized Surprises"*

86 West Utah Avenue - 465-3356  
PAYSON, UTAH 84651

Balloon Bouquets — Singing Telegrams  
Party and Gift Creations  
— WE DELIVER —

**Let Us Create a Hullabaloo Just For You**



Stylists: JoAnn Loveless - Jackie Newton - Nanette (Riley) Day

# *True Value*

Your local independently owned True Value®  
Hardware Store has national chain-buying power.

HARDWARE STORES

**We're here to help you. We're TOTAL HARDWARE.**

61 SOUTH 100 WEST  
PAYSON, UTAH 465-4581

SPORTING GOODS  
PAINT SUPPLIES

YARD & GARDEN  
TOYS

HOUSEWARES  
AUTOMOTIVE

Tonight We're Pleased  
To Give You  
A Little Song And Dance.

We're proud that our contributions helped  
make tonight's performance possible.

**First  
Security  
Bank**  
Member FDIC

For the finest in family fashion:

**CHRISTENSEN'S**

26 South Main  
Payson

A tradition older than Payson's  
Community Theatre salutes twenty  
years of quality entertainment.

When A Band-aid  
Isn't Enough . . .



think of  **Mountain  
View Hospital**  
Your Health Care Professionals

Medical emergencies can be frightening.  
Even the smallest one can be unpleasant.  
It's nice to know you can depend on  
Mountain View Hospital for emergencies  
and other medical care.

Services include:

- Emergency Room Physician 24 hrs.
- Free Physician Referral call 465-9201 ext. 113
- Wide range of Acute Hospital Services

- Personalized Birthing options
- Mental Health services
- Health education classes

1000 East U.S. Highway 6, Payson, Utah 84651

(801) 465-9201



**Payson**

830 North Main Street  
Payson, Utah 84651  
Phone: (801) 465-4861

**Comfort  
Inn**

- Indoor Pool/Spa (Local memberships available)
- Queen Size Rooms
- Satellite T.V. and Movie Rentals
- Free Continental Breakfast

For business or pleasure the  
Payson Comfort Inn is the Quality Choice.

Call 465-4861 (for reservations)

465-4889

*Days*  
MARKETS

PAYSON, UTAH

STORE HOURS: 7:00 A.M. - 10:00 P.M.  
CLOSED SUNDAY

Home of  
U.S.D.A. Choice Beef  
Garden Fresh Produce  
Famous In-store Bakery  
Fast, Friendly Service  
190 E. 100 N. Payson, Utah  
465-4889

PROUD  
TO BE A PART  
OF YOUR  
COMMUNITY!

**IT'S A  
GOOD TIME  
FOR THE  
GREAT TASTE**



**SPECIAL THANKS:** Mountain View High School, Evans Hairstyling College, Mary Kawakami College of Beauty, Comfort Inn - Payson, McDonald's - Payson, Crestview Convalescent Center, Kelli Frost, Jan Sanderson, Bennett's Paint, Provo Daily Herald, Payson Chronicle, Spanish Fork Press, Deseret News, Utah County Journal, Clay Bagley, Utah Holiday Magazine, Payson City Corporation, Payson City Senior Citizens, Heinz Peter Mueller, Val C. Rowley, Steve Twede, Renee Kennedy, Alan Anderson, Nedra Call, John Kunz

*\*This production partially funded by grants from Payson City Corporation, The Utah Arts Council, and the National Endowment for the Arts.*

*\*This production produced through special arrangement with Dramatists Play Services Inc.*



## **UPCOMING EVENTS**

**THE SOUND OF MUSIC**  
directed by Polly Dunn

**Auditions: May 11, 12, 13 1989**

**Performances: August 24, 25, 26, 28, 31 and September 1, 2, 4**

**INFORMATION: 489-8701**